



**B.S.P**  
**ARCHITECTURAL OFFICE**

Unit 5, 2nd Fl., No.72, Felestin St., Keshavarz Blv.  
Tel: (+98) 21 - 88929017  
Email: Boomshahr.paydar@gmail.com  
[www.bsp.green](http://www.bsp.green)

**MULTI COMPLEX PROJECTS**

# OMIDE KAROON HOTEL - COMMERCIAL COMPLEX



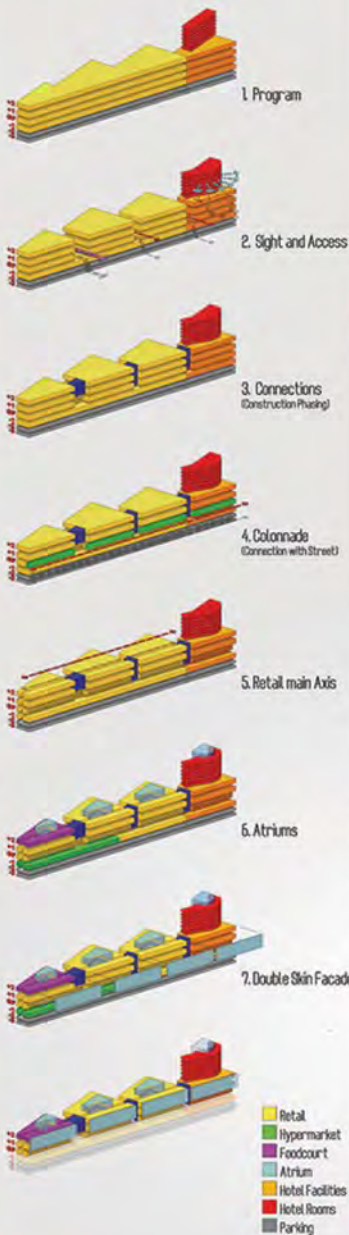
LOCATION: IRAN, AHVAZ  
AREA: 100000 sqm  
FLOOR COUNT:  
HOTEL - 14 ON THE GROUND FLOORS  
4 BASEMENT FLOORS  
RETAIL - 4 ON TE GROUND FLOORS  
3 BASEMENT FLOORS  
YEAR: 2014







## Design Approach



### Project Brief

In essence, the proposal consists of four clusters - one hotel building and three shopping malls - which are linked by transparent bridges.

### Site

Dominated by the neighboring KAROON river to the east, the project site is located beside a major river in the center of Ahvaz. From this unique location the new Omid Complex will have splendid views across the city and the proposed design maximizes this potential. Situated in a larger area bordered by the SAHELI Blvd to the east, and neighboring KANPARS Blvd the project site itself is located beside the Ahvaz DOLAT park to the East.

### Master plan

The design forms an integrated combination of four main blocks. The retail podium - organized over three clusters and four levels, aligned along the main route. This podium condition thereby organizes the site generating clearly defined routes and connections across the site while providing links between the KANPARS Blvd and KAROON River.

### Site Access

- The site has 3 main access points
- The main entrance to the underground parking will be located at the southern side of the site.
- On the north side the dedicated drop off for the Hotel is situated.
- At the western side of the site an additional entrance to the underground parking is located.

The retail podium is permeable in nature, allowing for exits and entrances on its sides, next to direct access to and from the Hotel building. The bottom two levels of the project is dedicated to underground parking.

### Site Access



## Double Skin Facade

Double skin facade, formed as unitized panels, comprise two skins of glass set apart, forming cavity in the region of 100mm to 300mm wide for hotel rooms with venetian blind placed between the skins and 2000mm podium fall. It includes shading devices in cavity spaces, preventing penetration of direct sunlight. Panels are either ventilated from the outside with fresh air, or are internally ventilated by the mechanical ventilation system. Combined systems of ventilating from both the outside and the inside are not used to date due to the conflicting requirements of the position of the double glazed units which need to be on one side of the panel (either inside face or outside face) to suit either internal ventilation or external ventilation in hot climate area like Ahvaz, the insulating glass should be placed at the inside layer to form a better thermal insulation. The cavity can be either mechanically ventilated or naturally ventilated to suit performance requirements. Air is drawn up through the cavity either from outside or from inside and is expelled at the top of the panel, typically on a floor by floor basis. Fresh air drawn from outside needs to be relatively free of dust and air-borne pollution and dusts to avoid it being deposited on the glass faces within the cavity. For both methods of ventilation, the inner skin of each panel is operable in order to allow access into the cavity for cleaning and maintenance. Blinds are usually set into the void in order to provide solar shading. Solar energy absorbed by the blinds is radiated into the cavity where it is drawn away by air rising through it. The warmed air is then rejected at the top of the panel, either externally or is returned to the mechanical ventilation system. right ventilation/cooling thermal mass of building), dust barrier, acoustic insulation, daylight control, and thermal comfort are the main advantages of double skin facades.

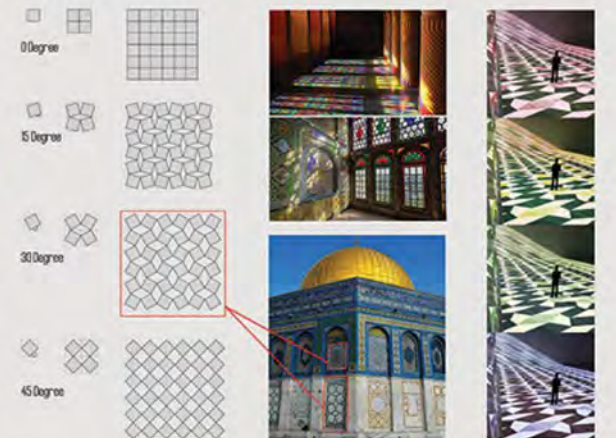


■ DSF for HOTEL

■ DSF for Shopping Mall

## Climatic Consideration in Traditional Architecture: Façade Ornaments, Colonnade

Iranian culture has a rich history of geometries such as rectangular shapes and it is these traditional patterns that form the base for the design of the Complex facade. The façade resembles the Sash Windows (DROSI) extracted from traditional architecture that provides a magnificent play of light and color in façade as well as interior space during day and night. This seamless design continuity is inspired by the traditional design strategies used in Iranian architecture where ornaments seamlessly connect various architectural elements. Providing the shaded walkway for pedestrians to moderate the hot climate of Ahvaz, inspired from traditional hot climate condition, leads to designing the eastern colonnade along the main route and river side connect the building with its immediate surrounding area and attract more people to the mall while creating an urban plaza in which predicted the entrances of commercial clusters.





# OMIDE KAROON HOTEL - COMMERCIAL COMPLEX





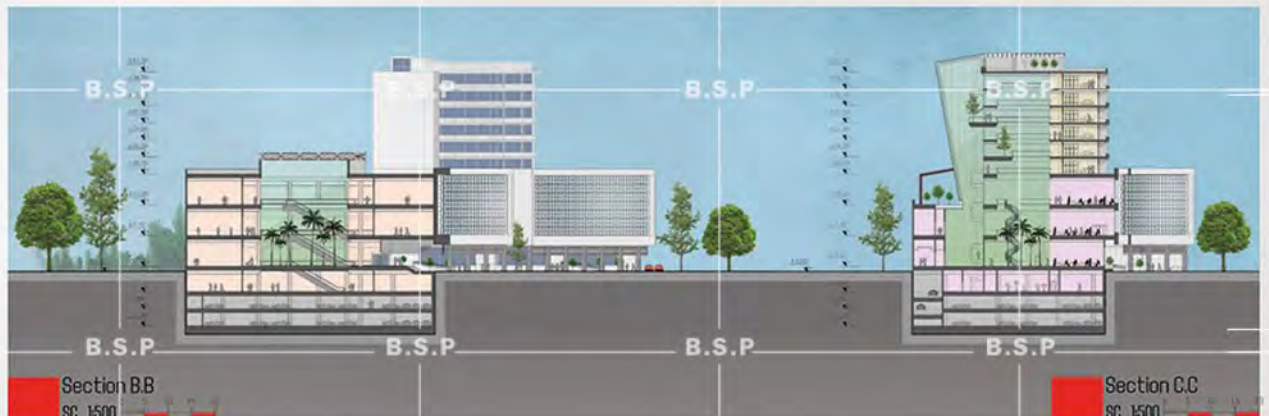


## SHOPPING MALL

The Shopping Mall clusters and its transparent bridges connected with urban context through existing urban corridors, providing easy access routes through the site while seamlessly linking up with the existing urban network. This Shopping Mall condition thereby organizes the site generating clearly defined routes and connections across the site while providing links between the New complex and its immediate surroundings. The main shopping center entrance is located at the eastern side of the site, by the existing drop-off from the SAHEL Blvd. Main access to the underground car park is provided along the southeastern edge of the site. The other access is located on the western access road. Furthermore, the retail Shopping Mall is directly accessible from the Hotel Tower at ground floor.

## Interior

A synergistic relationship exists when the different programs of a mixed use development are combined to take advantage of and create active shared facilities. Likewise, the shopping mall can count on the Hotel residents in first instance, as well as attracting a wider audience from the surrounding areas and thus, as a whole. The plan of the shopping mall radiates out from the footprint of the BAZZARS along the main route. Three main, box shape clusters make up the bulk of the shopping center, organized with transparent connections (bridges). All interior elements that organize the space such as escalators, skylights and retail volumes are following the same linear logic. The atrium in each cluster organized the shops by a skylight like TIMCHE in traditional Persian BAZZARS. For each cluster, cut outs in the podium roof provide internal courtyard, bringing natural daylight deep in the interior of the shopping Centre and dividing the overall mass of the shopping center into smaller, more recognizable volumes with individual identities.







**H O T E L**  
A P P R O A C H

The Hotel Tower is located at the northern part of the site, to fulfill the independency of construction phasing and operation, while preventing from noise resources on the southern part of the site.

The hotel orientation is based on the best climatic conditions and providing the full view of Karoon river and the city.

The hotel entrance directly linked to the SAHEL Blvd and a close relationship with the riverside park. Access and drop-off area are provided via an access road from that same eastern edge. A dedicated entrance to the underground car parking is located at the north side of the hotel.

A direct link with the shopping center is provided on the southern side of the building accessible from the hotel lobby.

Providing the real comfort condition, three type of green space available in design: the roof garden, sunken garden in lobby atrium and indoor green spaces repeated in main atria, mixed with natural ventilation strategies.

**I N T E R I O R**

The hotel tower provides a total of 72 keys divided over 6 different floors. A further 4 floors are housing support facilities such as restaurants, convention facilities, wellness center, etc as well as back of house service zones and plant areas.

The gradually morphing plan of the hotel generates specific views at each room of the hotel, thereby ensuring that each stay provides a surprisingly new experience.

At ground floor, a double height lobby area welcomes visitors into the heart of the hotel with a magnificent atrium intermittently living up the area and further reinforcing the spatial experience. Paying tribute to the historical patterns which generated the facade designs, the lobby also maintains rectangular shaped elements.







## JAM - COMMERCIAL COMPLEX



LOCATION: IRAN, JAM  
 AREA: 7000 sqm  
 FLOOR COUNT:  
 7 ON THE GROUND FLOORS  
 2 BASEMENT FLOORS  
 YEAR: 2017

**B.S.P**  
[www.bsp.green](http://www.bsp.green)





**JAM COMMERCIAL COMPLEX**  
B.S.P  
[www.bsp.green](http://www.bsp.green)





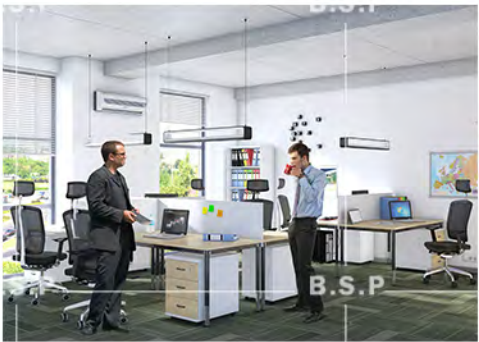
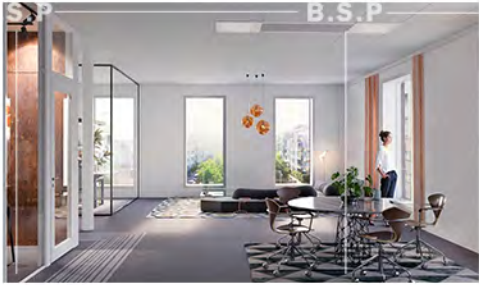
B.S.P. **JAM COMMERCIAL COMPLEX**

B.S.P.  
[www.bsp.green](http://www.bsp.green)



# AZADI OFFICE - COMMERCIAL COMPLEX

LOCATION: IRAN, TEHRAN  
FLOOR COUNT:  
12 ON THE GROUND FLOORS  
3 BASEMENT FLOORS  
YEAR: 2018



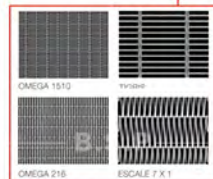
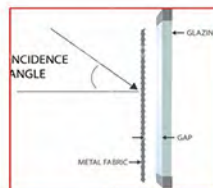
**OFFICE PROJECTS**



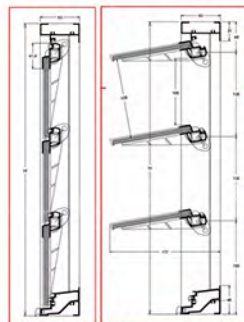
# PARSIAN BANK HEADQUARTERS

**B.S.P**  
[www.bsp.green](http://www.bsp.green)

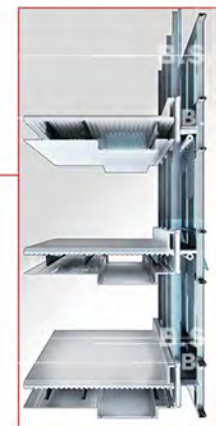
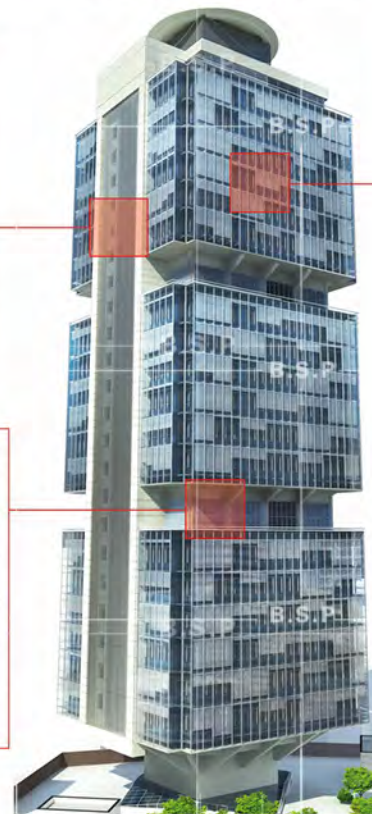
LOCATION: IRAN, TEHRAN  
 FLOOR COUNT:  
 25 ON THE GROUND FLOORS  
 2 BASEMENT FLOORS  
 YEAR: 2014



Mesh stainless steel جزئیات



جزئیات لوور شیشه ای



نمای مقاطع نمای دو پوسته





# KISH OFFICE COMPLEX

**B.S.P**  
[www.bsp.green](http://www.bsp.green)

LOCATION: IRAN, KISH  
FLOOR COUNT:  
15 ON THE GROUND FLOORS  
2 BASEMENT FLOORS



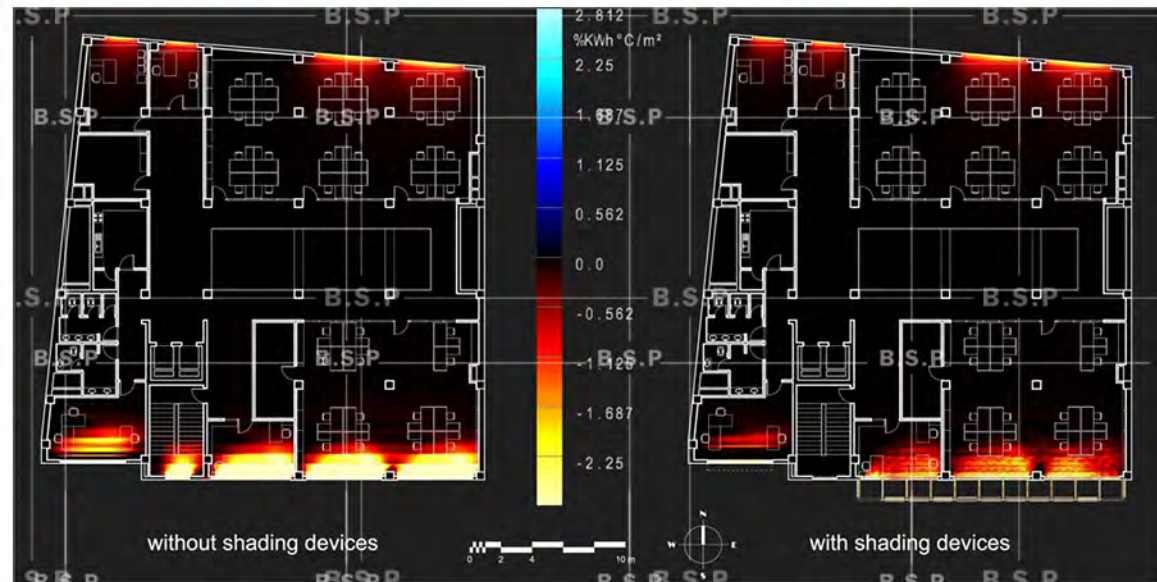
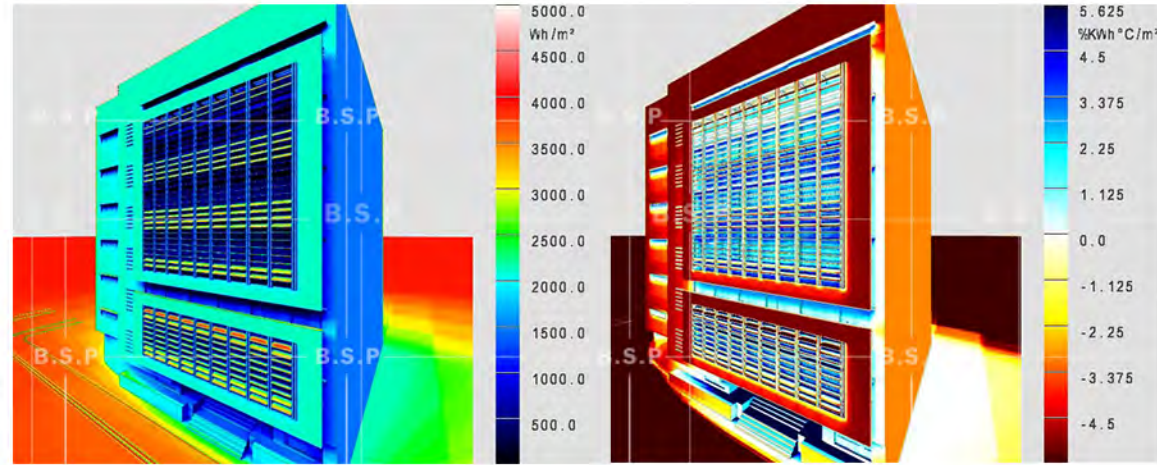
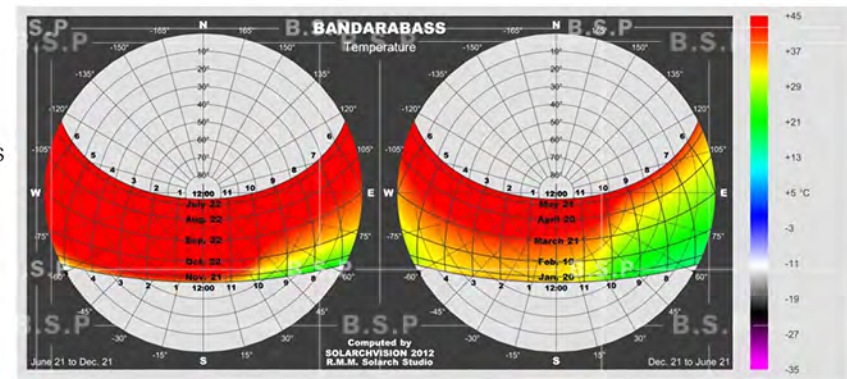




# MASKAN BANK

**B.S.P**  
[www.bsp.green](http://www.bsp.green)

LOCATION: IRAN, BANDAR ABBAS  
 FLOOR COUNT:  
 7 ON THE GROUND FLOORS  
 2 BASEMENT FLOORS  
 YEAR: 2004



## ENERGY ANALYSIS

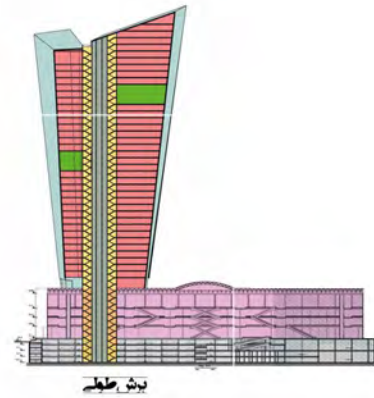


# OFFICE - COMMERCIAL COMPLEX

B.S.P

[www.bsp.green](http://www.bsp.green)

LOCATION: IRAN, PARDIS





# OFFICE - COMMERCIAL COMPLEX

LOCATION: IRAN, GHAZVIN



## IP-TV



## OFFICE





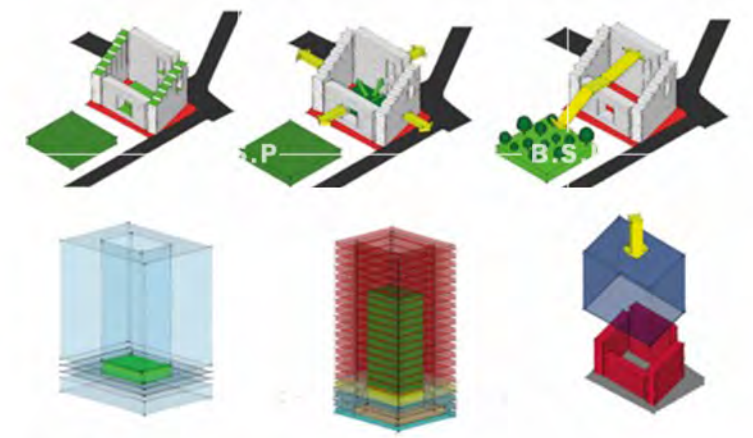
**RESIDENTIAL COMPLEX PROJECTS**



# ALGHADIR2 RESIDENTIAL COMPLEX

**B.S.P**  
[www.bsp.green](http://www.bsp.green)

LOCATION: IRAN, QOM  
FLOOR COUNT:  
17 ON THE GROUND FLOORS  
4 BASEMENT FLOORS  
YEAR: 2014



پارکینگ  
مسکونی  
نجاری  
فضای سبز

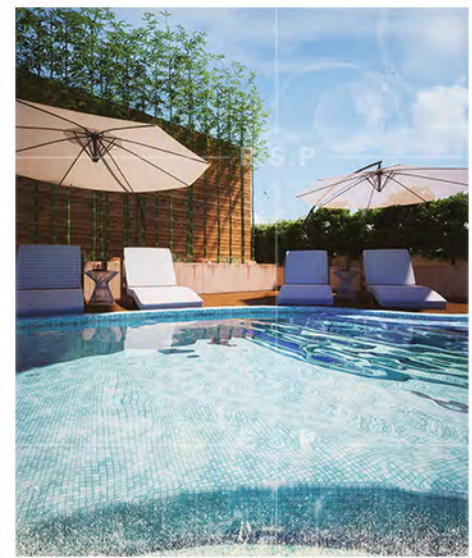




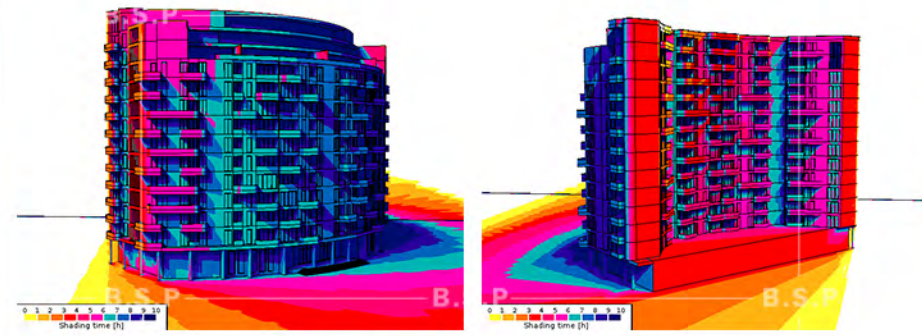
# ALGHADIR RESIDENTIAL COMPLEX

**B.S.P**  
[www.bsp.green](http://www.bsp.green)

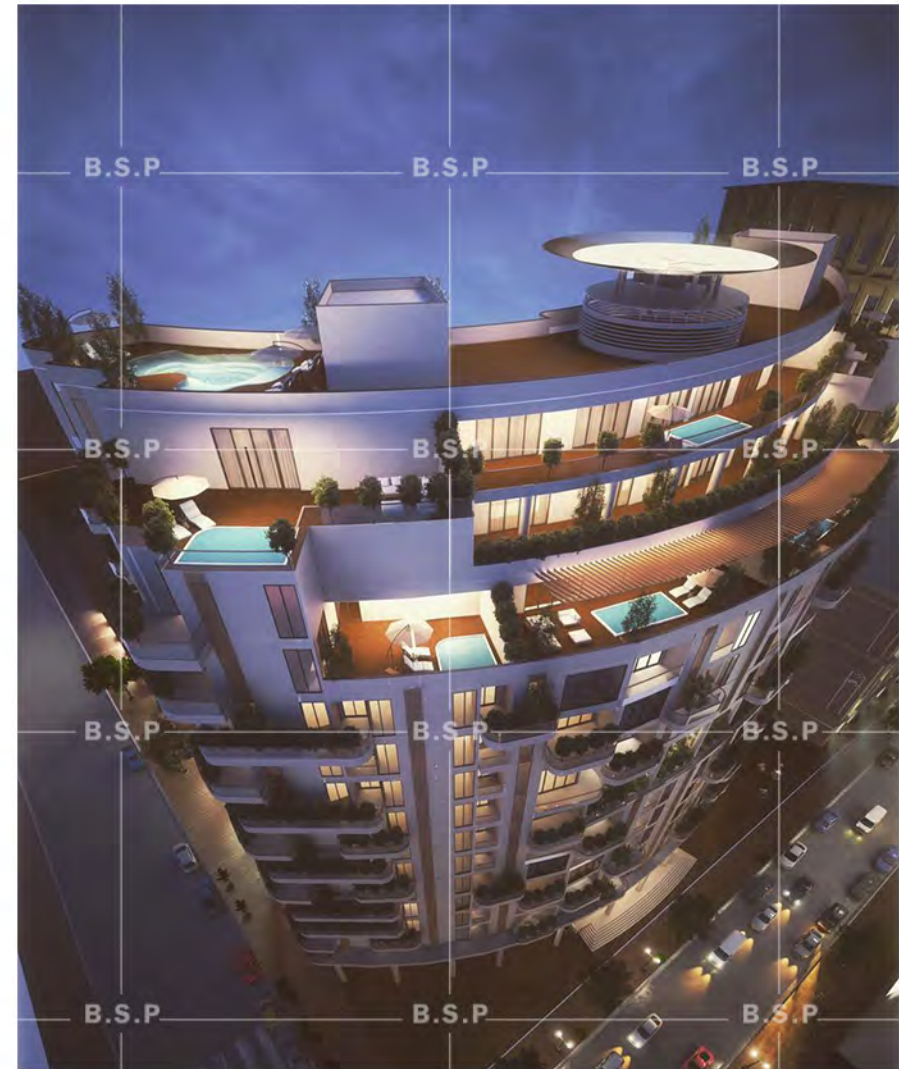
LOCATION: IRAN, QOM  
FLOOR COUNT:  
14 ON THE GROUND FLOORS  
3 BASEMENT FLOORS  
YEAR: 2019



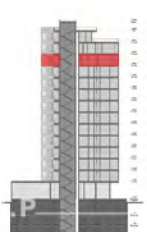
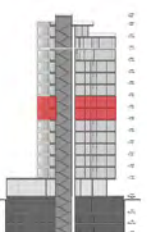
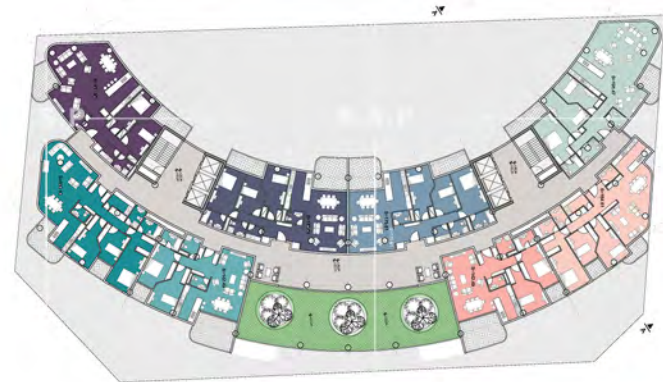
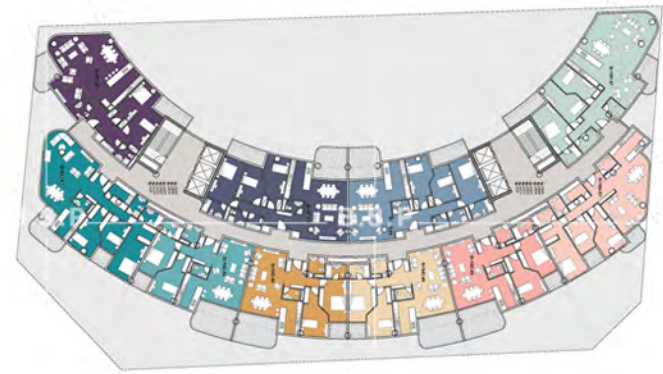
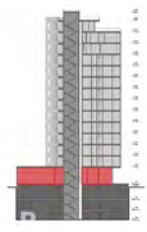




ENERGY ANALYSIS











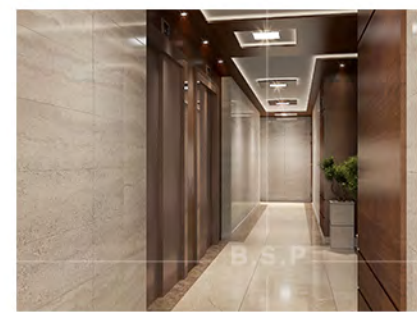
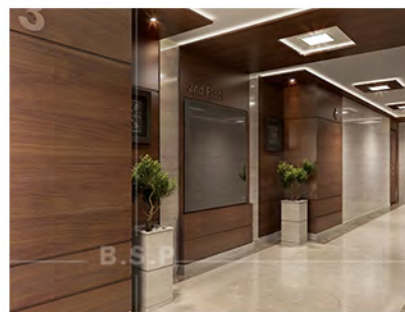
# ASEMAN RESIDENTIAL COMPLEX

**B.S.P**  
[www.bsp.green](http://www.bsp.green)

LOCATION: IRAN, TEHRAN  
FLOOR COUNT:  
13 ON THE GROUND FLOORS  
3 BASEMENT FLOORS  
YEAR: 2017











## CHALOOS RESIDENTIAL COMPLEX

**B.S.P**  
[www.bsp.green](http://www.bsp.green)

LOCATION: IRAN, CHALOOS  
FLOOR COUNT:  
10 ON THE GROUND FLOORS  
YEAR: 2017







## FARZANEGAN RESIDENTIAL COMPLEX

**B.S.P**  
[www.bsp.green](http://www.bsp.green)

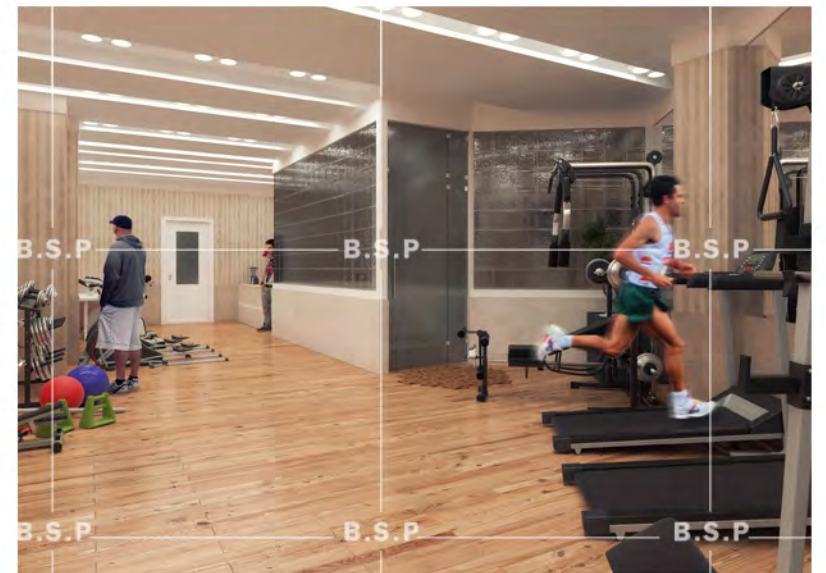
LOCATION: IRAN, TEHRAN  
FLOOR COUNT:  
21 ON THE GROUND FLOORS  
4 BASEMENT FLOORS  
YEAR: 2017





# FARZANEGAN RESIDENTIAL COMPLEX

B.S.P  
[www.bsp.green](http://www.bsp.green)



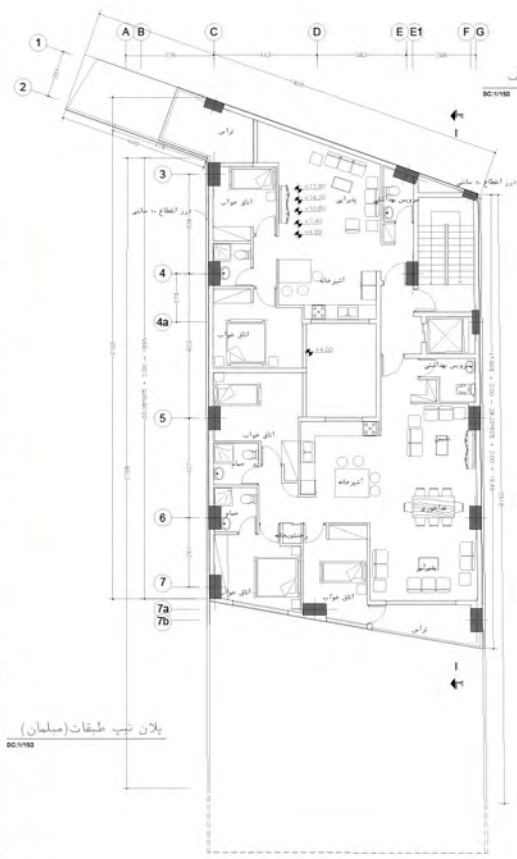
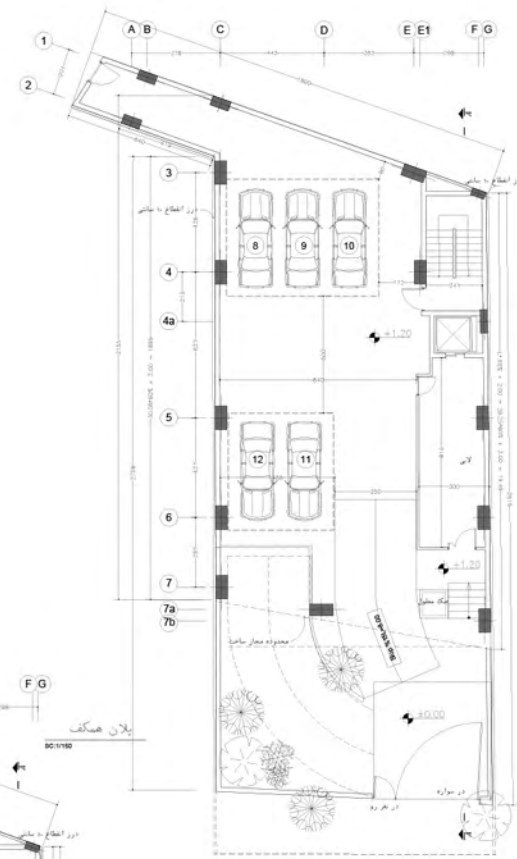




# DOLAT RESIDENTIAL

**B.S.P**  
[www.bsp.green](http://www.bsp.green)

LOCATION: IRAN, TEHRAN  
 FLOOR COUNT:  
 6 ON THE GROUND FLOORS  
 1 BASEMENT FLOOR  
 YEAR: 2018





# JORDAN RESIDENTIAL

B.S.P

[www.bsp.green](http://www.bsp.green)

LOCATION: IRAN, TEHRAN  
FLOOR COUNT:  
6 ON THE GROUND FLOORS  
1 BASEMENT FLOORS  
YEAR: 2018







## KORDESTAN RESIDENTIAL COMPLEX

**B.S.P**

[www.bsp.green](http://www.bsp.green)

LOCATION: IRAN, KORDESTAN

FLOOR COUNT:

4 ON THE GROUND FLOORS

YEAR: 2018





# RIVAS RESIDENTIAL COMPLEX

**B.S.P**  
[www.bsp.green](http://www.bsp.green)

LOCATION: IRAN, PARDIS  
YEAR: 2020





# RIVAS RESIDENTIAL COMPLEX

**B.S.P**  
[www.bsp.green](http://www.bsp.green)

LOCATION: IRAN, PARDIS  
YEAR: 2020





# ALBORZ RESIDENTIAL COMPLEX

**B.S.P**

[www.bsp.green](http://www.bsp.green)

LOCATION: IRAN, TEHRAN  
FLOOR COUNT:  
8 ON THE GROUND FLOORS  
4 BASEMENT FLOORS  
YEAR: 2020





# ALBORZ RESIDENTIAL COMPLEX

B.S.P  
[www.bsp.green](http://www.bsp.green)





# ALVAND RESIDENTIAL COMPLEX

**B.S.P**

[www.bsp.green](http://www.bsp.green)

LOCATION: IRAN, TEHRAN  
FLOOR COUNT:  
5 ON THE GROUND FLOORS  
3 BASEMENT FLOORS  
YEAR: 2020





# ALVAND RESIDENTIAL COMPLEX

B.S.P  
[www.bsp.green](http://www.bsp.green)







# KORDESTAN VILLA

**B.S.P**  
[www.bsp.green](http://www.bsp.green)

LOCATION: IRAN, KORDESTAN  
FLOOR COUNT:  
2 ON THE GROUND FLOORS  
YEAR: 2018





# RASHT VILLA

B.S.P  
www.bsp.green

LOCATION: IRAN, RASHT  
FLOOR COUNT:  
2 ON THE GROUND FLOORS  
YEAR: 2012





# ORDIBEHESHT VILLA TOWN

B.S.P

[www.bsp.green](http://www.bsp.green)

LOCATION: IRAN, KELARDASHT  
AREA: 12000 sqm  
YEAR: 2012

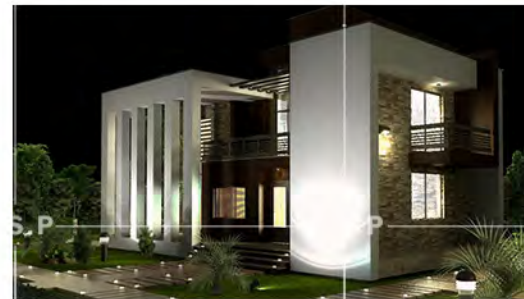




# ORDIBEHESHT VILLA TOWN

B.S.P

[www.bsp.green](http://www.bsp.green)





**1500 UNITS - NEW CITY OF HASHTGERD**



LOCATION: IRAN, HASHTGERD  
YEAR: 2009

**10000 UNITS - NEW CITY OF HASHTGERD**



LOCATION: IRAN, HASHTGERD  
YEAR: 2009

**1100 UNITS - NEW CITY OF PARAND**



LOCATION: IRAN, PARAND  
YEAR: 2006



# DARYADEL RESIDENTIAL COMPLEX

B.S.P  
www.bsp.green

LOCATION: IRAN, MAZANDARAN





# CHALOOS RESIDENTIAL COMPLEX

**B.S.P**

[www.bsp.green](http://www.bsp.green)

LOCATION: IRAN, CHALOOS  
FLOOR COUNT:  
13 ON THE GROUND FLOORS  
YEAR: 2017





**CULTURAL-SPORT PROJECTS**

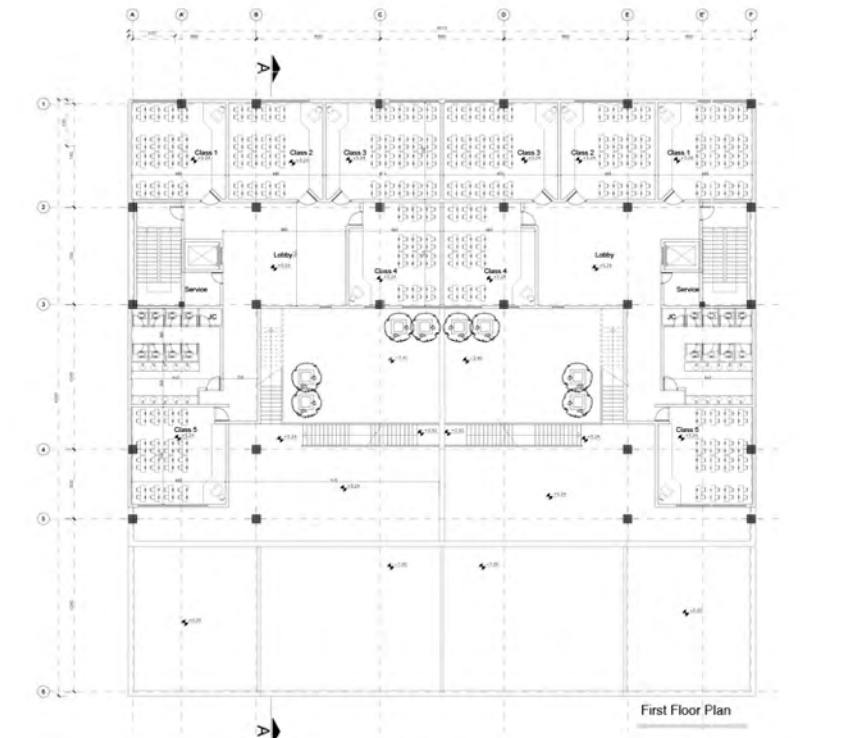
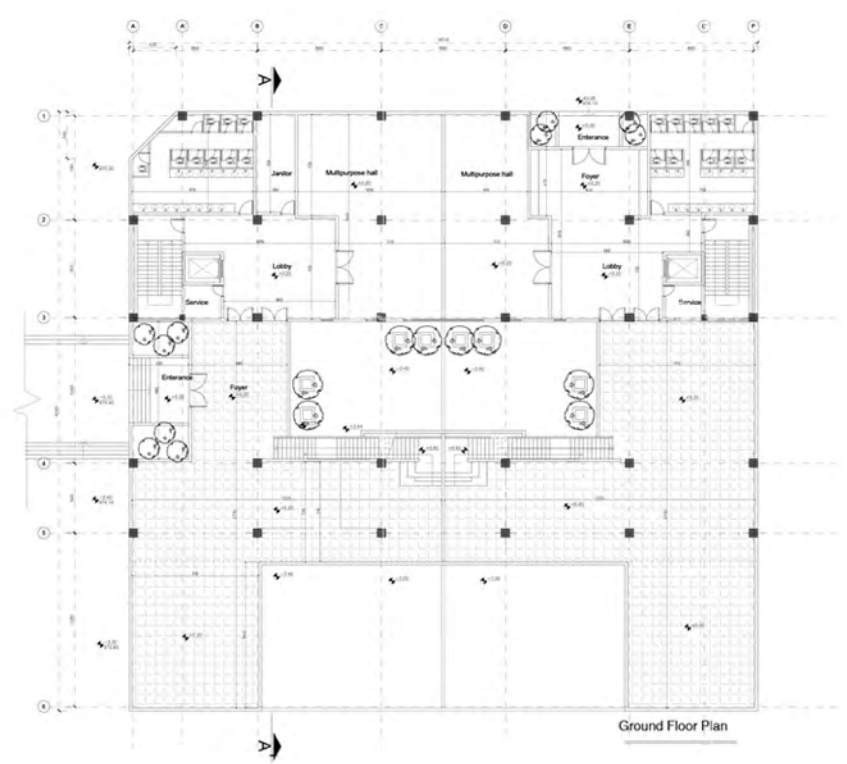


# AMIN SCHOOL

B.S.P

www.bsp.green

LOCATION: IRAN, GOM  
FLOOR COUNT:  
5 ON THE GROUND FLOORS  
3 BASEMENT FLOORS  
YEAR: 2019







**AMIN SCHOOL**  
B.S.P  
[www.bsp.green](http://www.bsp.green)





# PARDIS GREAT MOSQUE

B.S.P  
www.bsp.green



LOCATION: IRAN, PARDIS  
FLOOR COUNT:  
2 ON THE GROUND FLOORS  
3 BASEMENT FLOORS  
YEAR: 2019





# CULTURAL CENTER

**B.S.P**

[www.bsp.green](http://www.bsp.green)

LOCATION: IRAN, PARDIS  
AREA: 700 sqm  
FLOOR COUNT:  
2 ON THE GROUND FLOORS  
YEAR: 2020



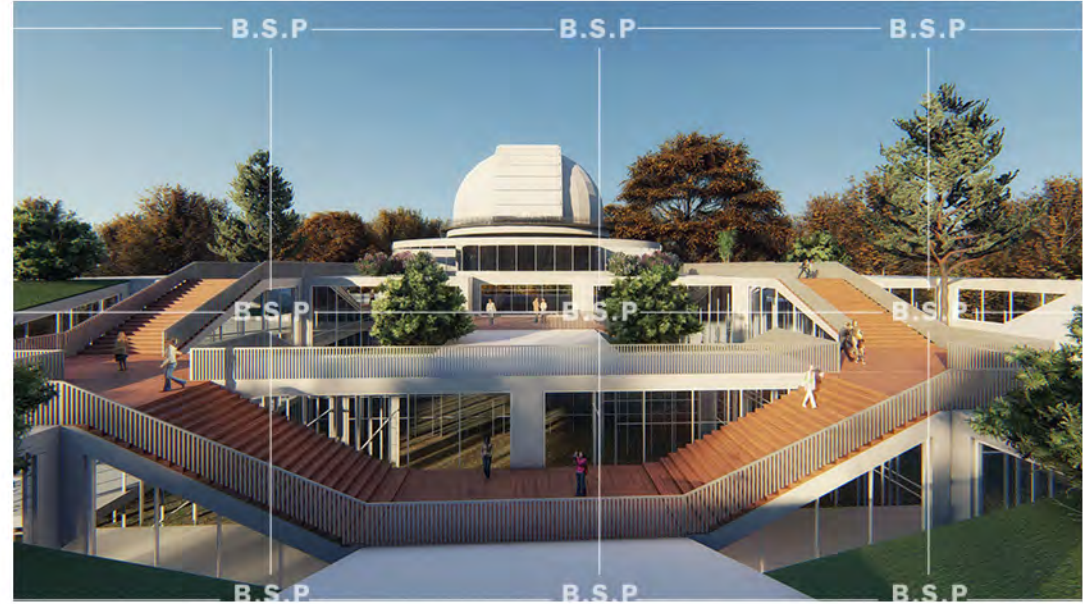


# CULTURAL CENTER

B.S.P  
www.bsp.green

LOCATION: IRAN, PARDIS  
AREA: 8000 sqm  
FLOOR COUNT:  
4 ON THE GROUND FLOORS  
YEAR: 2020

Alternative 01



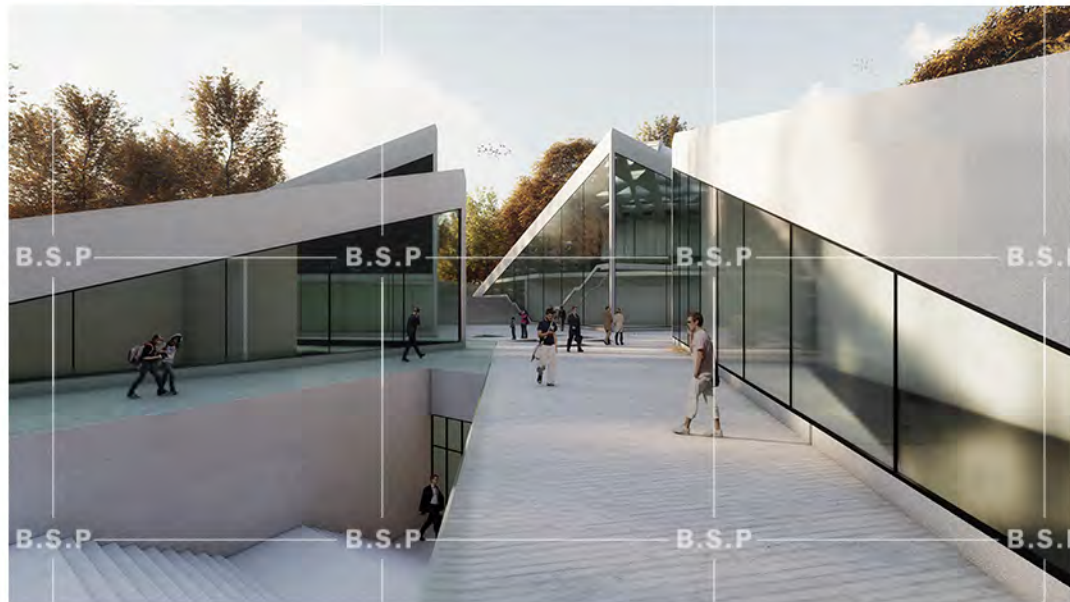
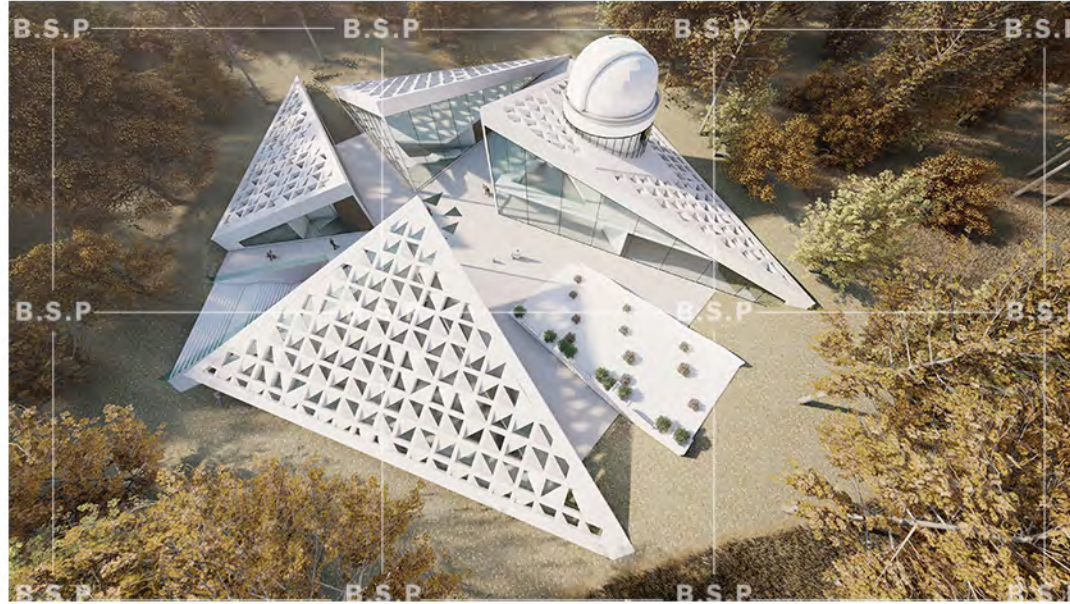


# CULTURAL CENTER

B.S.P  
www.bsp.green

LOCATION: IRAN, PARDIS  
AREA: 7000 sqm  
FLOOR COUNT:  
2 ON THE GROUND FLOORS  
YEAR: 2020

Alternative 02





# CULTURAL CENTER

B.S.P  
[www.bsp.green](http://www.bsp.green)

LOCATION: IRAN, PARDIS  
AREA: 8000 sqm  
FLOOR COUNT:  
2 ON THE GROUND FLOORS  
1 BASEMENT FLOOR  
YEAR: 2020

Alternative 03



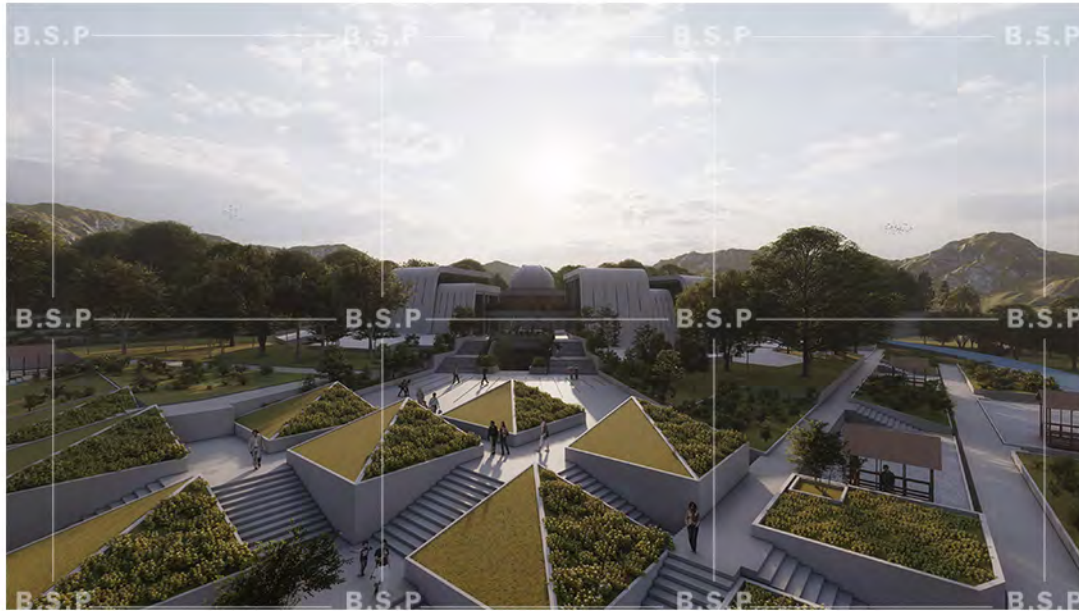


# CULTURAL CENTER

B.S.P  
www.bsp.green

LOCATION: IRAN, PARDIS  
AREA: 8000 sqm  
FLOOR COUNT:  
2 ON THE GROUND FLOORS  
1 BASEMENT FLOOR  
YEAR: 2020

Alternative 03





# PARDIS LIBRARY

B.S.P

[www.bsp.green](http://www.bsp.green)

LOCATION: IRAN, PARDIS

YEAR: 2020





**PARDIS LIBRARY**  
B.S.P  
[www.bsp.green](http://www.bsp.green)





**PARDIS LIBRARY**  
B.S.P  
www.bsp.green

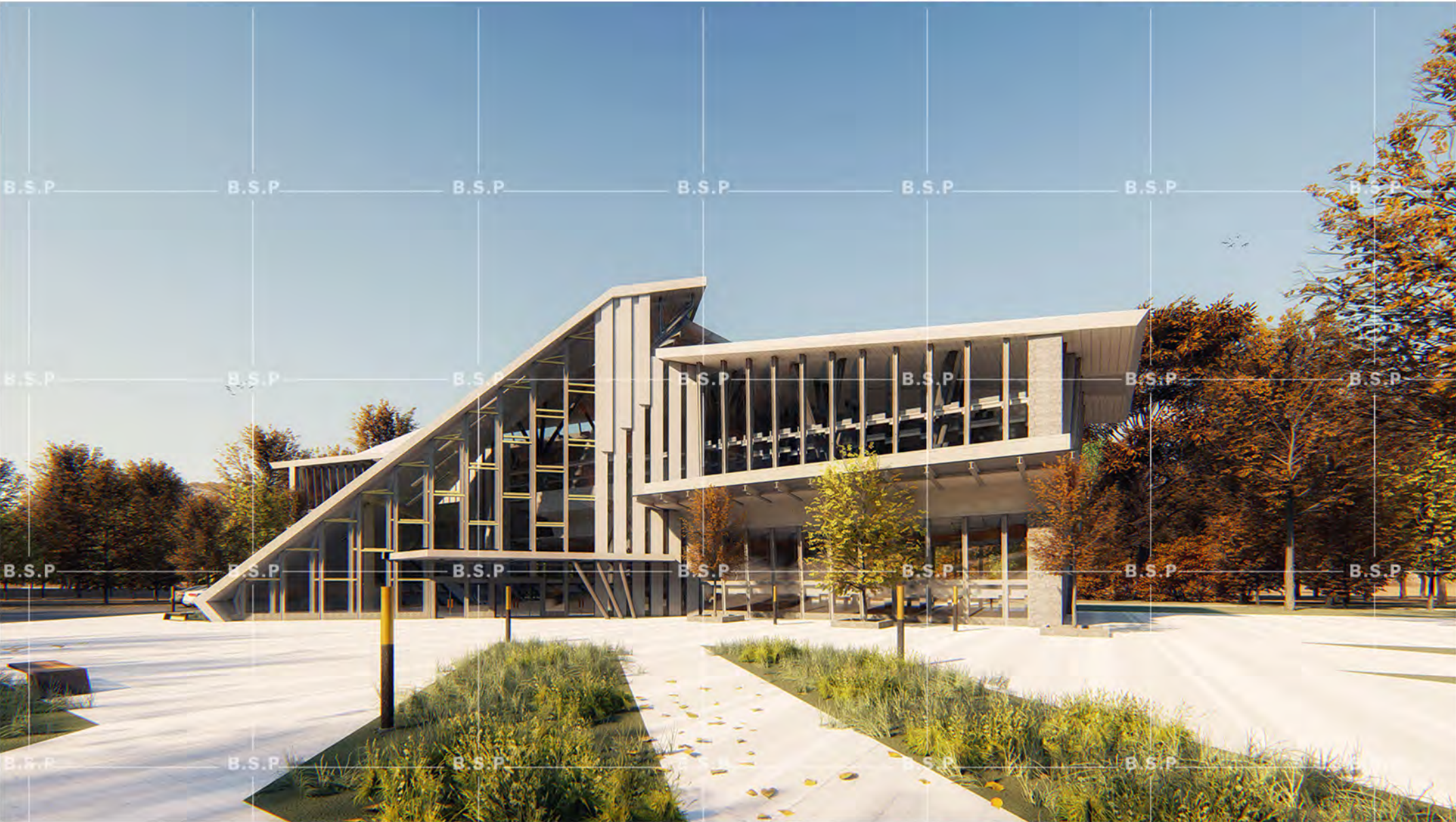




# FADAK SPORT COMPLEX

**B.S.P**  
[www.bsp.green](http://www.bsp.green)

LOCATION: IRAN, TEHRAN  
FLOOR COUNT:  
3 ON THE GROUND FLOORS  
YEAR: 2019





# NAHJOLBALAGHE SPORT COMPLEX

**B.S.P**

[www.bsp.green](http://www.bsp.green)

LOCATION: IRAN, TEHRAN  
FLOOR COUNT:  
3 ON THE GROUND FLOORS  
YEAR: 2019





# SEDROOS SPORT COMPLEX

**B.S.P**  
[www.bsp.green](http://www.bsp.green)

LOCATION: IRAN, TEHRAN  
FLOOR COUNT:  
3 ON THE GROUND FLOORS  
YEAR: 2019





# PARDIS - PHASE 5 SPORT COMPLEX

**B.S.P**

[www.bsp.green](http://www.bsp.green)

LOCATION: IRAN, PARDIS  
FLOOR COUNT:  
2 ON THE GROUND FLOORS  
YEAR: 2020





# PARDIS - PHASE 8 SPORT COMPLEX

**B.S.P**

[www.bsp.green](http://www.bsp.green)

LOCATION: IRAN, PARDIS  
FLOOR COUNT:  
2 ON THE GROUND FLOORS  
YEAR: 2020



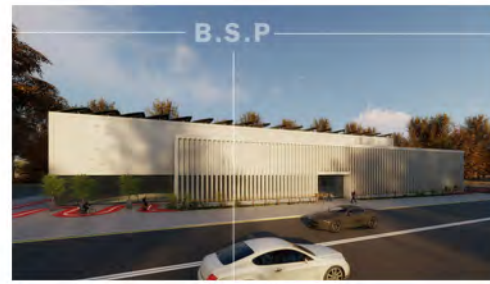


# PARDIS - PHASE 11 SPORT COMPLEX

**B.S.P**

[www.bsp.green](http://www.bsp.green)

LOCATION: IRAN, PARDIS  
FLOOR COUNT:  
2 ON THE GROUND FLOORS  
YEAR: 2020





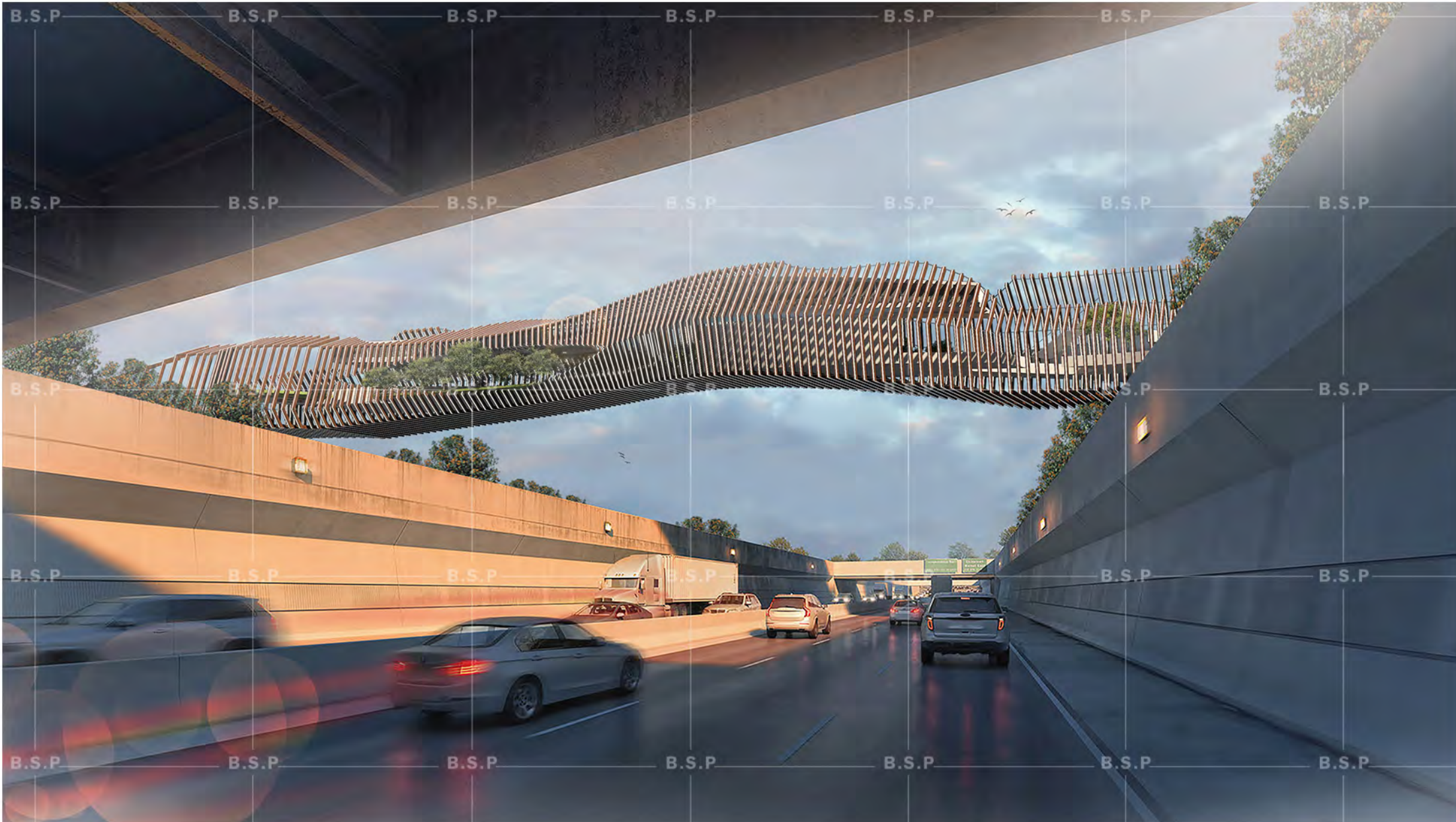
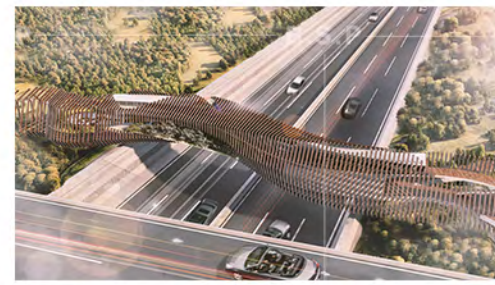
**LANDSCAPE PROJECTS**



# ELGOLI BRIDGE DESIGN COMPETITION

**B.S.P**  
[www.bsp.green](http://www.bsp.green)

LOCATION: IRAN, TABRIZ  
YEAR: 2018





# BANAFSHEH PARK

**B.S.P**  
[www.bsp.green](http://www.bsp.green)

LOCATION: IRAN, PARDIS  
YEAR: 2014







# POONEH PARK

**B.S.P**  
[www.bsp.green](http://www.bsp.green)

LOCATION: IRAN, PARDIS  
YEAR: 2014





# PARDIS BRIDGE

B.S.P  
[www.bsp.green](http://www.bsp.green)

LOCATION: IRAN, PARDIS  
YEAR: 2020

ALTERNATIVE 01

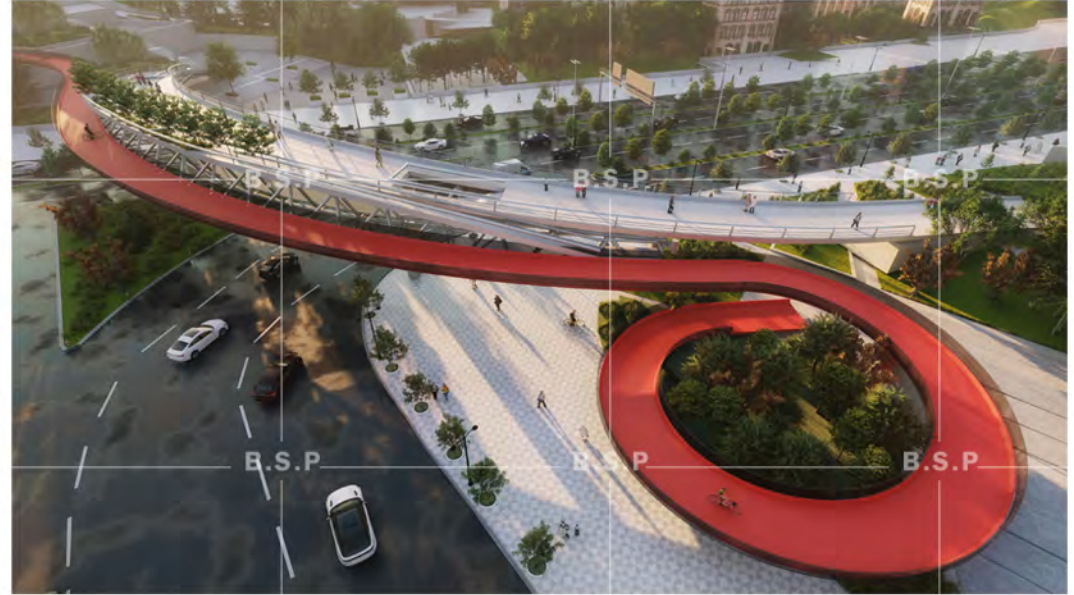




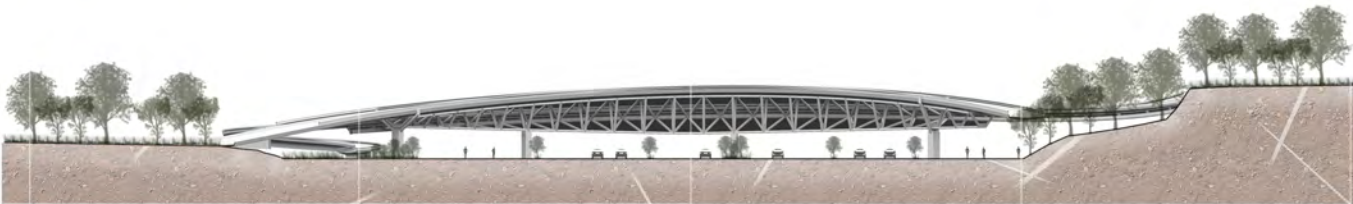
# PARDIS BRIDGE

B.S.P  
www.bsp.green

ALTERNATIVE 01



SOUTH ELEVATION



NORTH ELEVATION



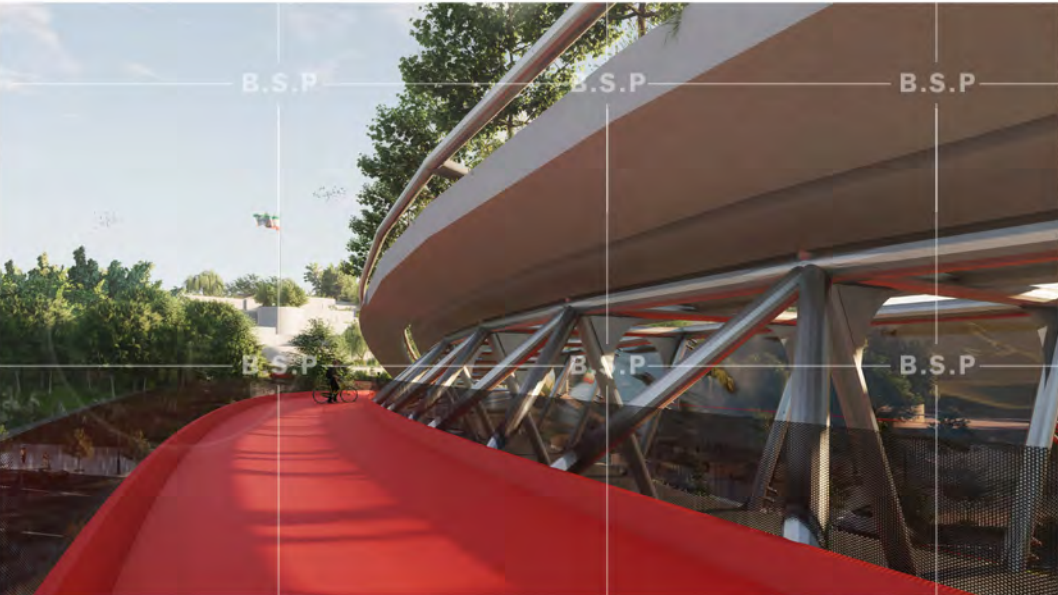
SITE PLAN



# PARDIS BRIDGE

B.S.P  
www.bsp.green

ALTERNATIVE 01





# PARDIS BRIDGE

**B.S.P**  
[www.bsp.green](http://www.bsp.green)

LOCATION: IRAN, PARDIS  
YEAR: 2020

ALTERNATIVE 02





# PARDIS BRIDGE

B.S.P  
www.bsp.green

ALTERNATIVE 02



SOUTH ELEVATION



NORTH ELEVATION

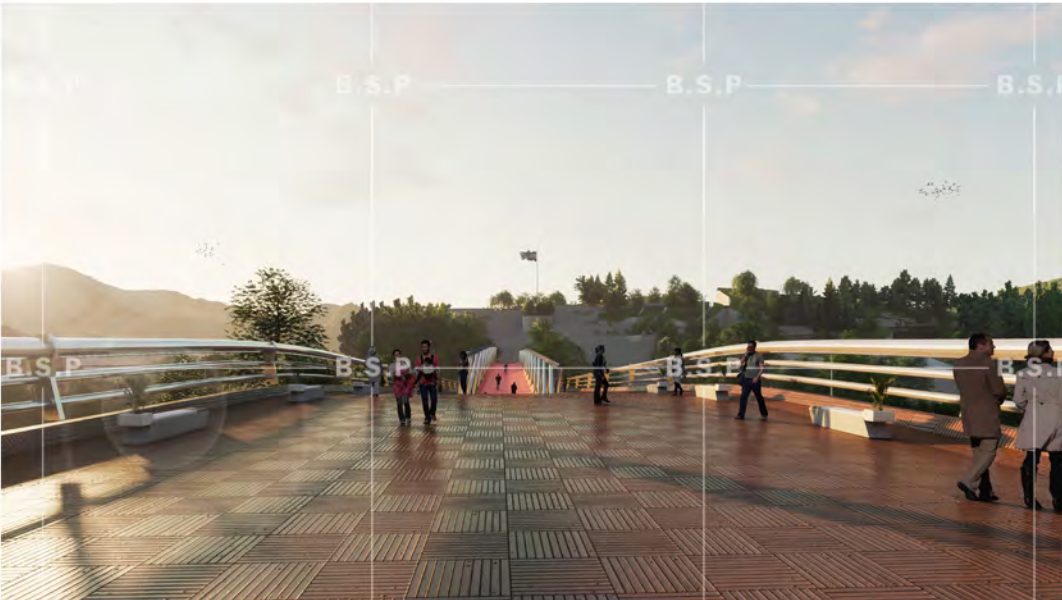
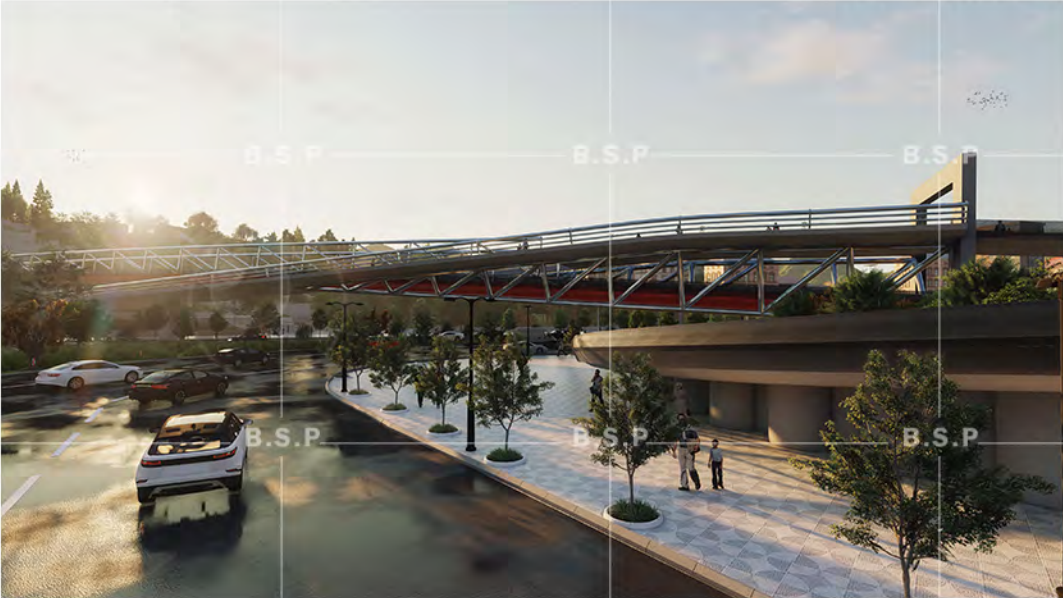




# PARDIS BRIDGE

B.S.P  
www.bsp.green

ALTERNATIVE 02





**INTERIOR PROJECTS**







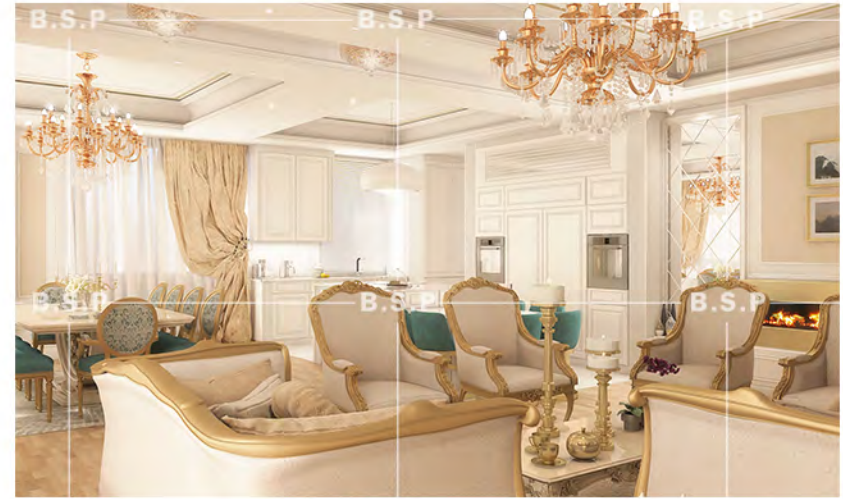
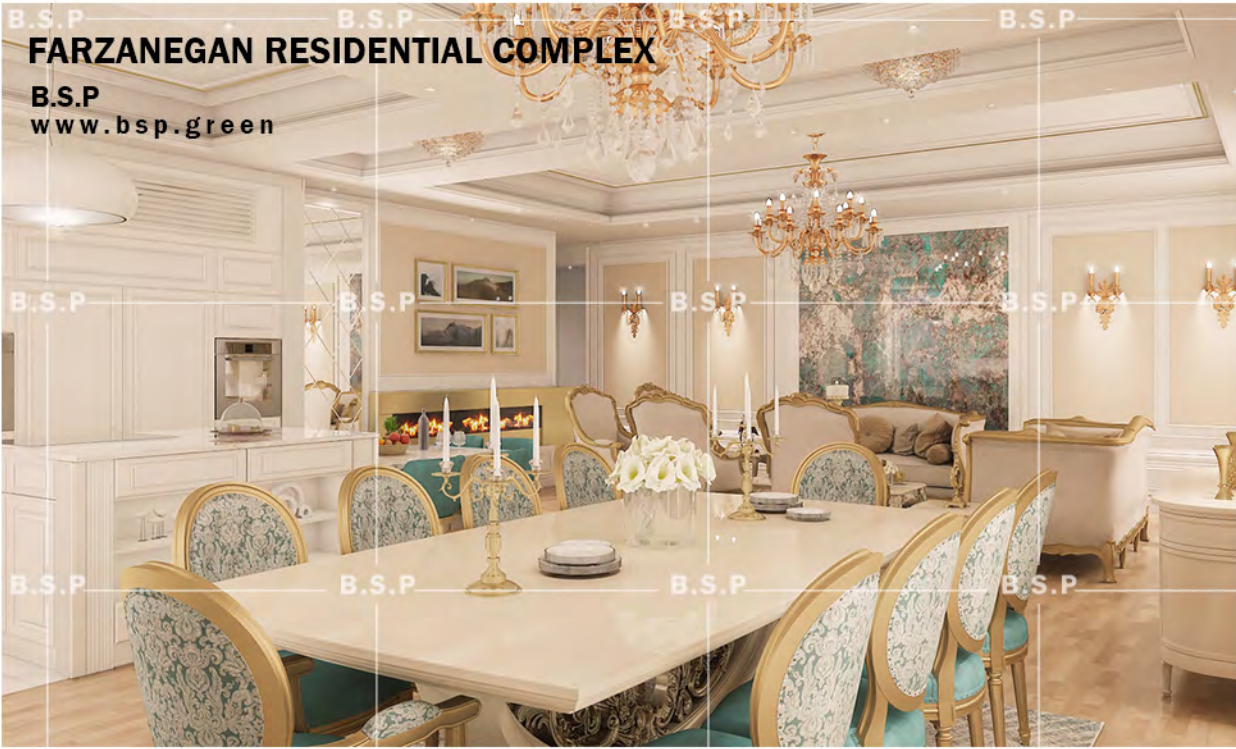
B.S.P. B.S.P. B.S.P. B.S.P.

# FARZANEGAN RESIDENTIAL COMPLEX

B.S.P.  
[www.bsp.green](http://www.bsp.green)



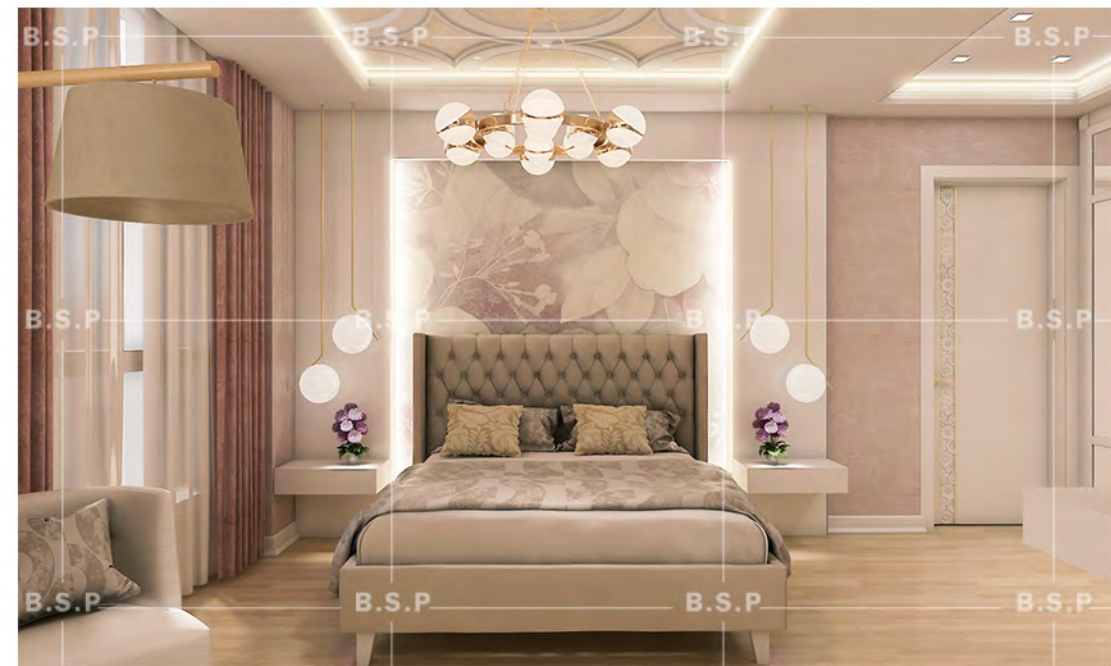




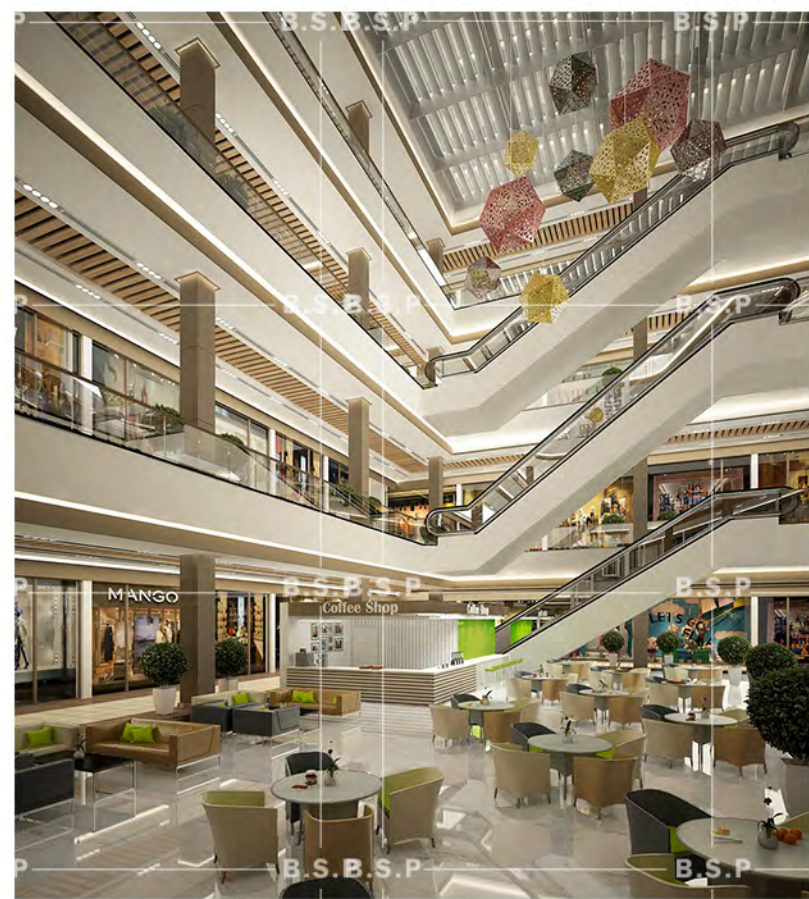
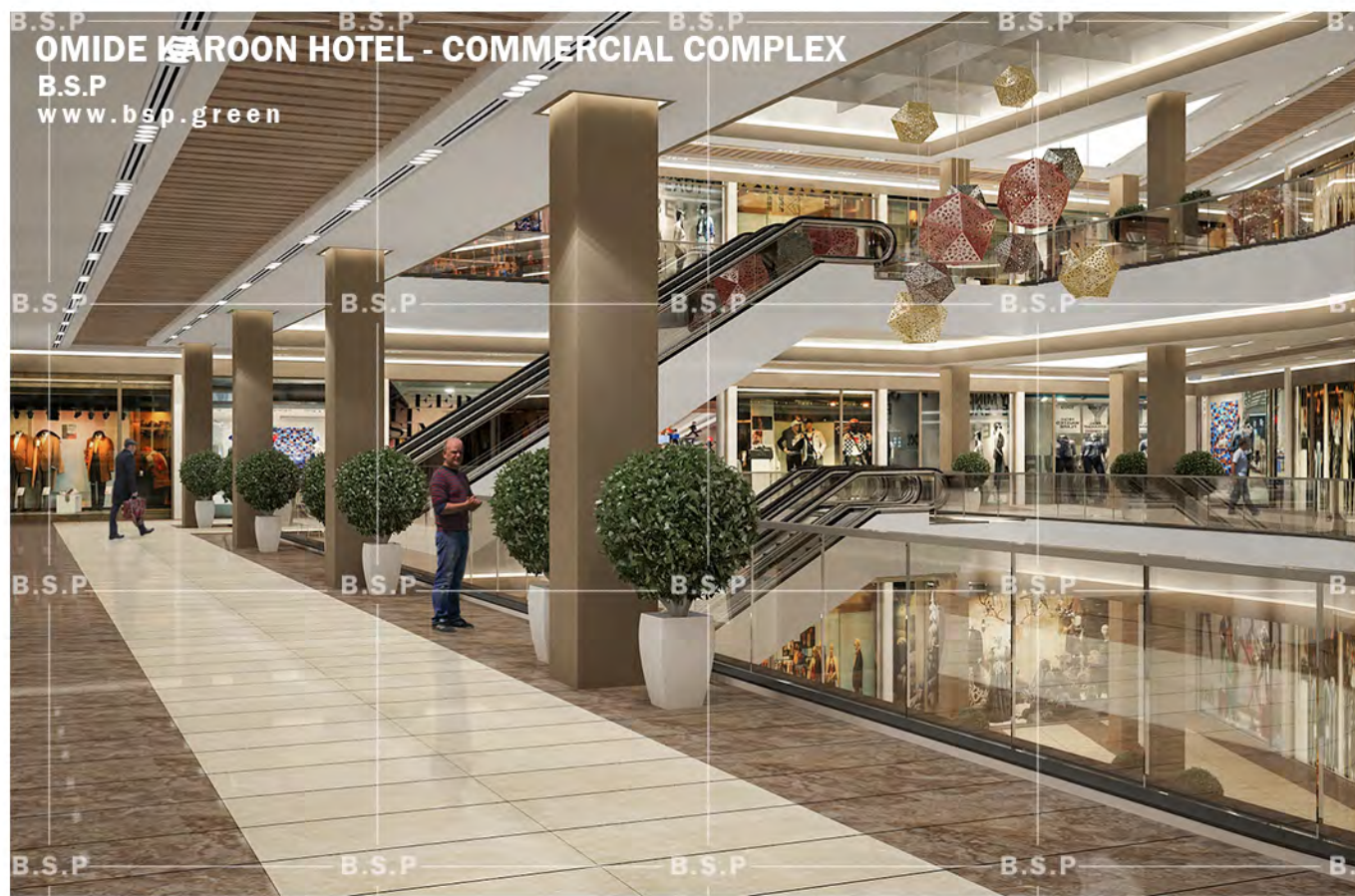


# FARZANEGAN RESIDENTIAL COMPLEX

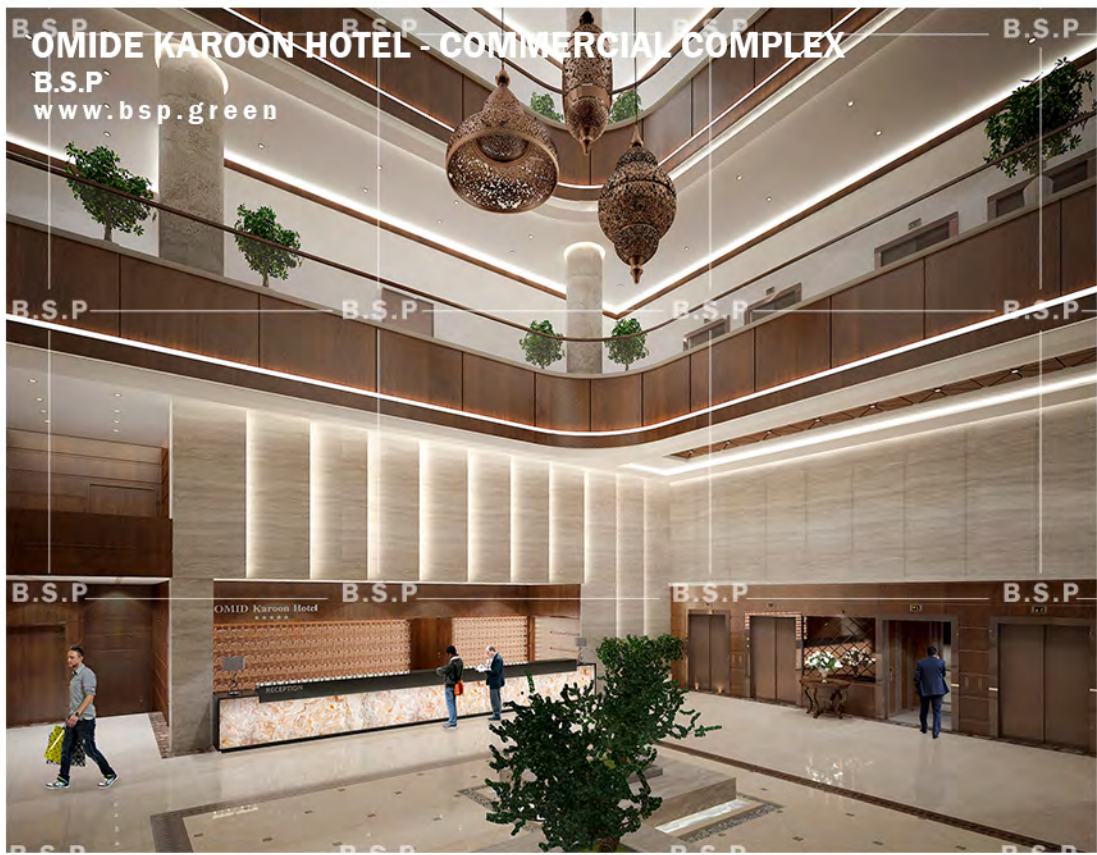
B.S.P  
[www.bsp.green](http://www.bsp.green)















**COMMERCIAL COMPLEX**  
www.bsp.green



# BATHROOM - RESIDENTIAL COMPLEX

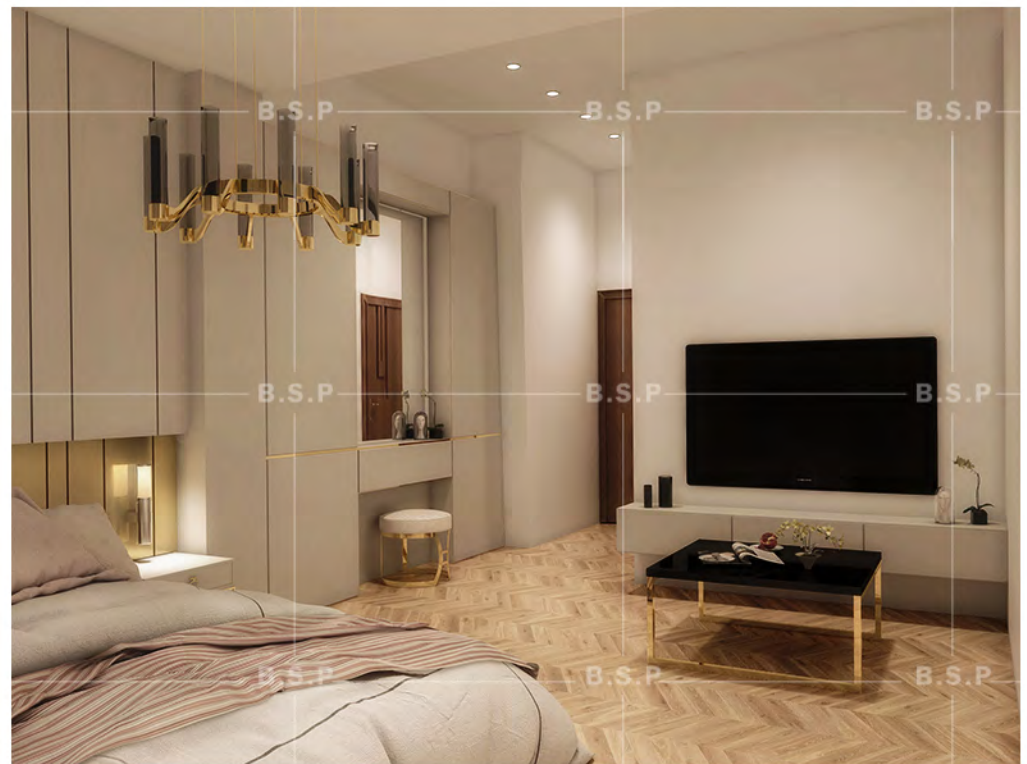
B.S.P  
www.bsp.green





# BEDROOM - RESIDENTIAL COMPLEX

B.S.P  
www.bsp.green







## ASEMAN RESIDENTIAL COMPLEX

B.S.P

[www.bsp.green](http://www.bsp.green)







# PROJECTS LIST

پروژه	موقعیت	کاربری	زیربنا/ مساحت	وضعیت پروژه
مطالعات بهره گیری از انرژی های نوین و آب	پردیس	فضای سبز	10 هکتار	مطالعات
بوستان بنفشه پردیس	پردیس	فضای سبز	3 هکتار	تجهیز کارگاه
بوستان پونه پردیس	پردیس	فضای سبز	3 هکتار	تجهیز کارگاه
بوستان تپه خورشید	پردیس	فضای سبز	10 هکتار	فاز دو
ساماندهی رود دره آرا پردیس	پردیس	فضای سبز	65 هکتار	متوقف
پیاده راه سلامت	پردیس	فضای سبز	7.5 هکتار	طراحی فاز یک
طرح بدنه شهری خیابان قزوین	تهران	شهرسازی	60 هکتار	متوقف
پل دسترسی و رصد خانه بوستان تپه خورشید	پردیس	فرهنگی تفریحی	1.5 هکتار	طراحی فاز یک
توسعه مسجد جامع پردیس	پردیس	فرهنگی مذهبی	7500	طراحی فاز یک
کانون پرورش فکری کودکان	پردیس	فرهنگی آموزشی	700	طراحی فاز یک
اداری تجاری آزادی	تهران	اداری تجاری	32000	متوقف
مجتمع تجاری ارم	تهران	اداری تجاری	40000	پایان اجرا
گزارش ایمنی حریق - اداری تجاری جام	تهران	اداری تجاری	30000	پایان اجرا
اداری تجاری قائم	قزوین	اداری تجاری	18000	نازک کاری
اداری کیش	کیش	اداری - تجاری	25000	توقف اجرا
تجاری خدماتی جم	جم - هرمزگان	اداری - رفاهی	6000	فاز دو
شبکه IPTV	تهران	اداری - صنعتی	8000	توقف اجرا
بانک مسکن - سرپرستی و شعبه مرکزی	هرمزگان	اداری	17000	پایان اجرا
مجتمع اداری اکباتان	تهران	اداری	15000	پایان اجرا
اداری پارسیان (شرکت طرح و تکوین)	تهران	اداری	38000	توقف اجرا
اداری افریقا	تهران	اداری	6000	سفت کاری
گزارش ایمنی حریق - چند منظوره صادقه	تهران	خدماتی تجاری	48000	توقف اجرا
رویال صدف	چابهار	خدماتی تجاری	1000000	اتمام فاز یک
فاز دوم برج میلاد (شرکت طرح و تکوین)	تهران	خدماتی تجاری	460000	توقف اجرا
باغ تالار گرمدره	کرج	خدماتی تفریحی	6000	اجرای سازه



# PROJECTS LIST

پروژه	موقعیت	کاربری	زیربنا/ مساحت	وضعیت پروژه
مدرسه ایمان	قم	آموزشی	9800	طراحی فاز دو
مدرسه امین	قم	آموزشی	8000	طراحی فاز یک
امید کارون	اهواز	هتل تجاری	115000	اتمام طراحی
معماری داخلی هتل پارسین کرمانشاه	کرمانشاه	هتل	25000	پایان اجرا
شهرک ویلابی اردیبهشت	کلاردشت	اقامتی	20000	نازک کاری
هتل لوتوس کیش (شرکت طرح و تکوین)	کیش	اقامتی	60000	اتمام فاز یک - متوقف
برج دیدی (شرکت طرح و تکوین)	نور	اقامتی	14000	پایان اجرا
منطقه نمونه گردشگری	هاشمک	توریستی	40 هکتار	متوقف
منطقه نمونه گردشگری	هشیلان	توریستی	65 هکتار	متوقف
مسکونی آسمان	منطقه 22 تهران	مسکونی	15000	پایان اجرا
برج مسکونی نوشهر	مازندران	مسکونی	11000	فاز دو
برج مسکونی چالوس	مازندران	مسکونی	12000	فاز یک
تعاونی مسکن خلبانان هما	منطقه 22 تهران	مسکونی	150000	طراحی فاز یک
مسکونی فرزندانگان	منطقه 22 تهران	مسکونی	30000	پایان سفت کاری
مسکونی الغدیر	قم	مسکونی	35000	طراحی فاز یک
مسکونی رویان	رستم رود	مسکونی	15000	پایان اجرا
مسکونی یزد	یزد	مسکونی	2500	سفت کاری
مسکونی اختیاریه	تهران	مسکونی	3000	خاکبرداری
برج میلاد ( همکار شرکت بلند پایه)	تهران	مخابراتی	35000	پایان اجرا
پارک آبی پارس (شرکت طرح و تکوین)	کرج	رفاهی ورزشی	16000	پایان اجرا
باشگاه ورزشی فاز 8	پردیس	ورزشی	2155	طراحی فاز یک
باشگاه ورزشی فاز 5	پردیس	ورزشی	1840	طراحی فاز یک
باشگاه ورزشی فاز 11	پردیس	ورزشی	2504	طراحی فاز یک
آماده سازی مسکن مهر پردیس	پردیس	آماده سازی	600 هکتار	پایان اجرا
آماده سازی مسکن مهر هشتگرد	هشتگرد	آماده سازی	120 هکتار	پایان اجرا
کارخانه سامانه آوای پایتخت	جاجرود	صنعتی	6000	پایان اجرا





**B.S.P**  
**ARCHITECTURAL OFFICE**

SUMMER 2020